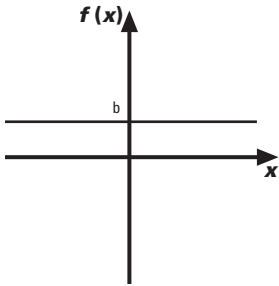


Les fonctions réelles

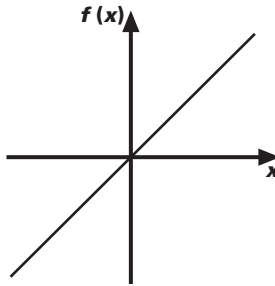
Fonction constante

$$f(x) = b$$



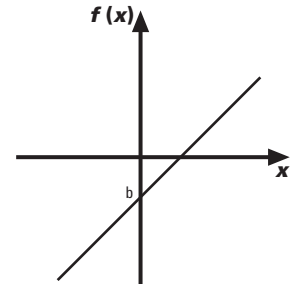
Fonction linéaire

$$f(x) = ax$$



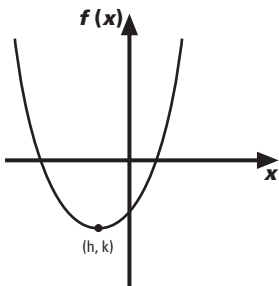
Fonction affine

$$f(x) = ax + b$$



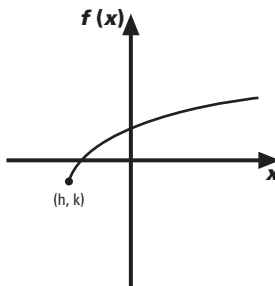
Fonction quadratique

$$f(x) = a(x - h)^2 + k$$



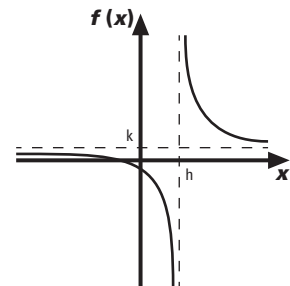
Fonction racine carrée

$$f(x) = a\sqrt{b(x - h)} + k$$



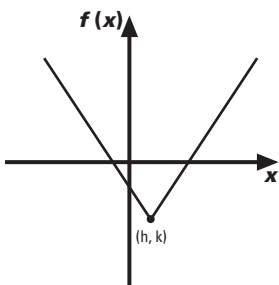
Fonction rationnelle

$$f(x) = \frac{a}{b(x - h)} + k$$



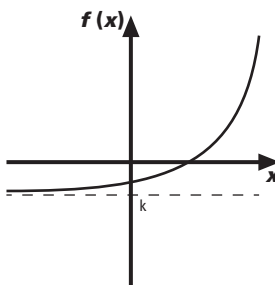
Fonction valeur absolue

$$f(x) = a|x - h| + k$$



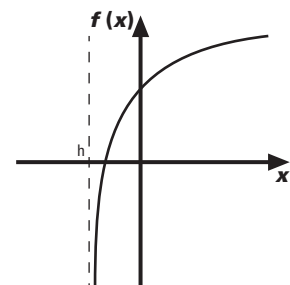
Fonction exponentielle

$$f(x) = ac^{b(x - h)} + k$$



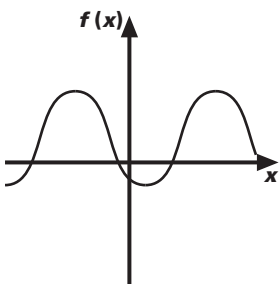
Fonction logarithmique

$$f(x) = a \log_c b(x - h) + k$$



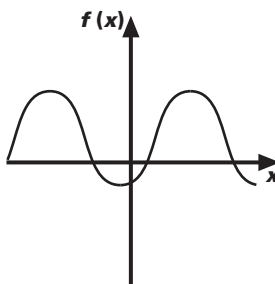
Fonction sinus

$$f(x) = a \sin b(x - h) + k$$



Fonction cosinus

$$f(x) = a \cos b(x - h) + k$$



Fonction tangente

$$f(x) = a \tan b(x - h) + k$$

